



GPS-Tracking platform

for Business and Service Providers

Professional platform

for running large and medium GPS tracking services
on the B2B and B2C markets

www.navixy.com

All-in-one solution

Navixy is all-in-one GPS tracking software solution. The platform has all the necessary features: Rich web applications, Mobile apps, Integration with most GPS trackers, Administrator tools, Billing and Payment, API and Plugins.



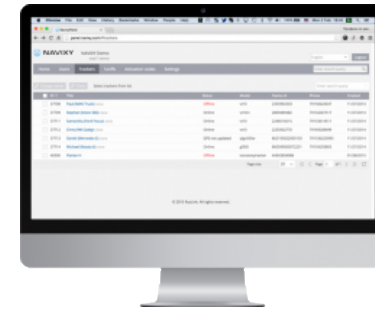
Web interface

Smart and simple – this is what users will say about your service. Intuitive web-interface embeds the latest technologies, looks attractive and works fast. Also it meets the whole range of applications – from pet tracking to sophisticated enterprise solutions.



Mobile applications

Wherever your users are, they have the full access to the platform from any mobile device. Navixy gives free 'X-GPS' apps for all major mobile platforms so users can track their assets from any place and locate other people with GPS in their smartphones or tablets

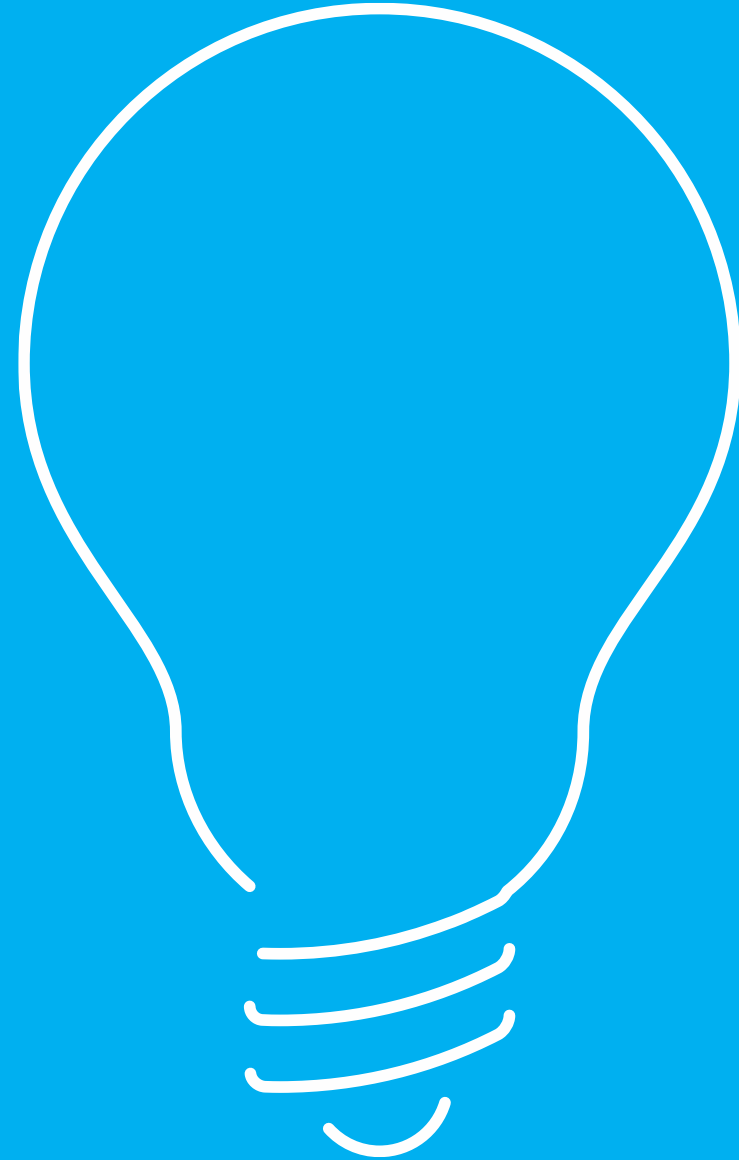


Admin Panel

Gain visibility into, and control over, the commercial services you offer with Navixy Admin panel. As an essential part of the platform it offers deep customization, comprehensive service management, flexible billing and lots of tools to optimize your staff workflow.

Highlights for users

- Modern Web-interface
- User-friendly Mobile Apps
- Business-focused applications



Up-to-date Web-interface

Navixy interface isn't just about how GPS tracking software looks, but rather about how it works. The platform runs well on any modern web browser, on screen of any size.

The screenshot displays the Navixy web interface with several key components:

- Top Panel:** Navigation icons for Vehicles, Employees, Maintenance, and Eco driving. A sidebar on the right contains 'YOUR LOGO HERE', Tracking, Reports, Tasks, and Fleet.
- Eco driving Section:** A form for generating reports with fields for Date range (Jun 29, 2016 00:00 — Jun 29, 2016 23:59), Control days (Mo, Tu, We, Th, Fr, Sa, Su), Control time (00:00 to 23:59), Day/Night/Always, and Penalty settings.
- How careful your drivers are?:** A section with three icons: Speeding penalty points, Harsh driving, and Excessive idling.
- Engine hours report:** A pie chart showing 'In movement 3 h 56 m: 2%' and 'Idling 1 h 48 m: 1%'. Below it is a 'Daily activity histogram' bar chart for dates Jun 22, 23, 24, and 25, 2016, with a legend for 'In movement' (red) and 'Idling' (blue).
- Generated reports:** A list of reports for 'Rahul (Kamaz)', 'Daniel (Mercedes E)', and 'Michael (Mazda 6)', including 'Engine hours report', 'Vehicle readings report', and 'Fuel report'.
- Main Map:** A Google Map of Moscow with a red track overlay. A pop-up window shows details for a location: 'Address: ул. Мира, 20, Ленинск, Владимирская обл., Россия, 601241', 'Time: May 10, 2016 18:03', 'Elapsed time 3 h 40 m', and 'Mileage: 185.24 km'.
- Bottom Panel:** A table titled 'Engine Hours (daily)' with columns for Idling (hrs, %), Average interval, Mileage, km, Average speed, km/h, and Intervals.

Idling	hrs	%	Average interval	Mileage, km	Average speed, km/h	Intervals
0 h 30 m	28%	0 h 07 m	27.49	20	14	
0 h 16 m	91%	0 h 04 m	0.4	13	4	
0 h 10 m	30%	0 h 04 m	7.88	18	8	

In English, Spanish, Arabic, Russian and many other languages.

Mobile apps

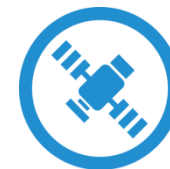
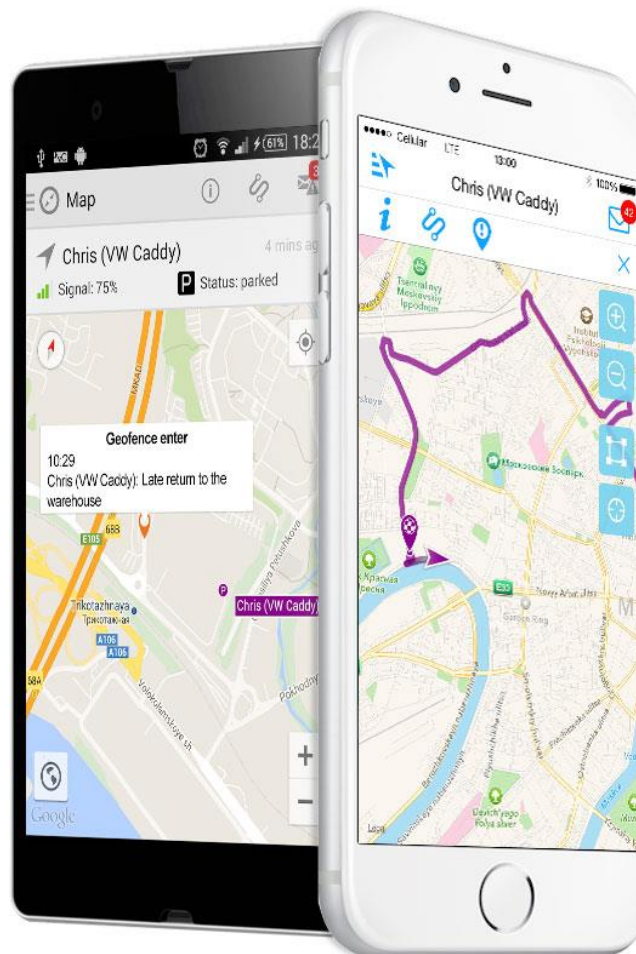
We offer two Mobile apps for GPS tracking — ‘X-GPS Monitor’ and ‘X-GPS Tracker’.

They are available for Android and iOS platforms and can be downloaded for free from Google Play and App Store.



X-GPS Monitor – Track your assets

The App allows users to view their assets on mobile screens: where they are moving now or were in the past. Users can also get all the necessary information (e.g. speed, fuel level, CAN bus data) in real time, and receive notifications about important events.



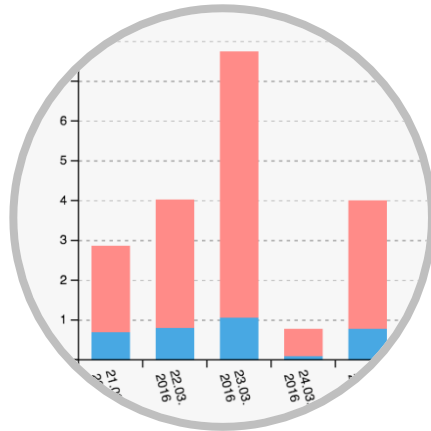
X-GPS Tracker – Share your location

Locate your people (mobile employees, kids etc.) with the help of their smartphones or tablets. The settings can be easily adjusted for pedestrians and vehicle use. The smart power management reduces power consumption. Also you can use such features as ‘Chat’, user-defined ‘Statuses’, and other.



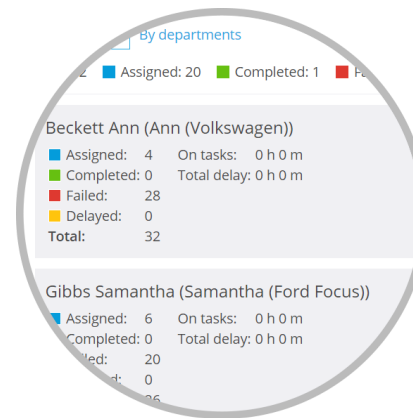
Business-focused applications

Navixy helps business customers to manage fleets, increase mobile workforce productivity and improve goods dispatching in multiple ways: comprehensive analytics, specific applications and integrations.



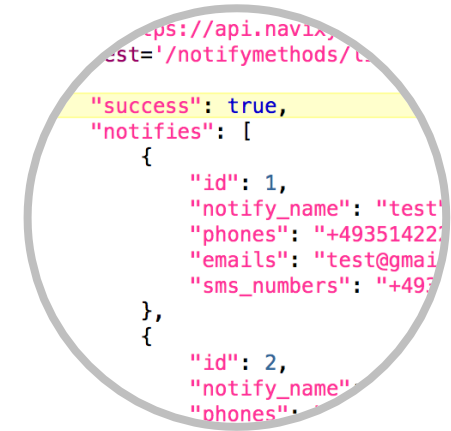
Analytical reports

The overall analytics allows to focus on any aspect of mobile asset management. Reports with charts are provided in multiple formats, on request or by schedule. Background data preprocessing brings fast all the information.



«Tasks» and «Fleet»

For specific business purposes there are special applications like 'Tasks' and 'Fleet'. They allow to plan routes, manage tasks, measure team productivity, monitor driving behavior, schedule vehicle maintenance, simplify costs accounting, and many more.



Plugins, API and SDK

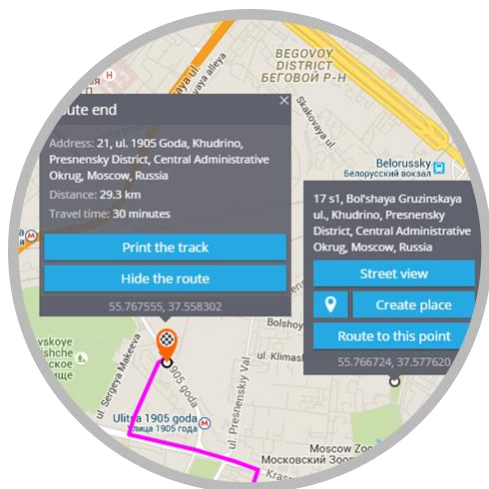
Developers can have the full access to all the data with simple and powerful Navixy APIs. For common use cases there is a set of 'plugins', that let you embed GPS tracking functionality right into web sites and social pages.

Smart Web interface

Configurable maps and GIS tools

Navixy is very friendly to all sources of 'geo' information you may need to deliver top services specific to your region and target audience. It perfectly works with any kind of web maps and in-house tile servers, over simple or secured SSL connection. You may add several map layers, open-source or commercial, and combine them according to your packages for end users.

The GPS tracking software supports multiple connections to all kind of GIS databases – for geocoding, directions, traffic, LBS positioning and other. Furthermore, in our ServerMate packages we include unlimited number of requests to all essential services, so you don't spend extra money for providing your customers with comprehensive reporting and advanced map tools.



Plans, Billing and Payments

Get maximum profitability and meet your customers expectations by offering right service packages with flexible billing. Plan editor allows you to create as many products as you need, choose billing cycles, set fees and rates for all sort of services, apply restrictions on using particular tools of GPS tracking software. You may limit the list of available GPS tracker models or require to enter a secret code every time user activates a new device.

Use payment gateways to automate user subscriptions. Connect your PayPal, Avangate or Skrill accounts to receive online payments, or use our billing API to charge and correct user balance in real time. You can use promo codes for building your referral network. View growing revenue statistics and receive daily reports to your inbox.

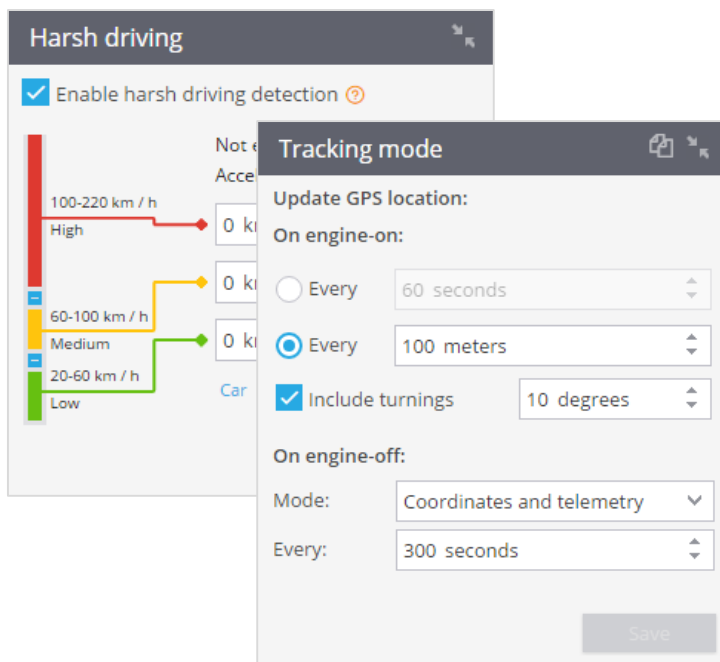


M2M that serves user needs

Automatic activation of GPS trackers

When a user adds a new device to his account, Navixy GPS tracking software automatically makes all the required settings using over-the-air (OTA) technology in a few seconds. User should only enter the phone number of the SIM card installed in a GPS tracker.

The system automatically detects and assigns APN settings, configures server address and port, and all recommended settings for easy start – via SMS and GPRS/IP channel. The result: neither your users, nor your support team need to configure devices manually.



Remote GPS device management

For the most popular GPS tracker settings Navixy provides graphic interface with easy controls so that users can adjust these parameters in a very convenient way. The smarter GPS tracker is, the wider set of options is available: tracking mode, power saving, harsh driving, special sensors, CAN bus parameters, LED indication and many more. All saved settings are automatically converted to M2M commands and sent over GPRS/IP or SMS, and will be applied no matter if a device is currently online or offline.

Technical support may have the full access to the device via professional Air Console.

Choose any tracking devices

Navixy closely supports several hundred tracking devices and the list is constantly growing.



The screenshot displays the Navixy web interface for configuring a GalileoSky 2.3 device. It includes a 'Hardware extras' table with the following items:

Hardware extras	Status
Fuel level sensor reading	✓
Tracking features	
Location by Cell ID	✓
	✓
	✓
	✓
	✓
	✓
	✓
	✓

The main configuration area for the GalileoSky 2.3 device includes:

- Object label: Daniel (Mercedes E)
- Group: Sales department
- Odometer: 537
- Phone number: +791536220995
- Tracking mode: 100 meters
- Harsh driving: Enabled with acceleration and braking thresholds.
- Tow detection: Enabled with motion sensor sensitivity and motion power settings.

A 'Device activation' sidebar on the right shows a list of supported devices from manufacturers like Coban and Concox, including models such as GK309, GS503, GT02, GT03A, GT06N, and GT100.

All the currently supported devices may be found on our website
www.navixy.com/devices
Use the one you need or suggest us a new device

3 ways of deployment

Your Navixy platform may be hosted in our world-class data centers, in the real cloud (AWS, Azure etc.) and on your own server hardware.



ServerMate

The platform for your business is hosted in our data centers.

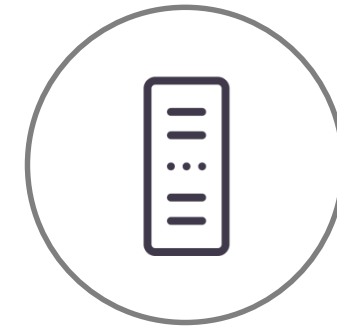
Get it out of the box in several minutes.
Minimum efforts for outstanding reliability and up-to-date software.



Cloud

Be independent and do not worry about servers. Get a private cloud.

Install Navixy platform in the Amazon Web Services cloud with a few clicks and get the perfect scalability.



On-Premise

Host the tracking platform on your own hardware for complete control.

Ideal for companies with strict in-house policy, own server hardware and experienced IT staff.





Get more information
about professional GPS tracking platform



www.navixy.com

Email: info@navixy.com

USA +1 858 815 9045
Mexico +52 334 1642158
UK +44 808 1641499

France +33 644 605141
Germany +49 1573 5988250
Russia +7 495 223 0427